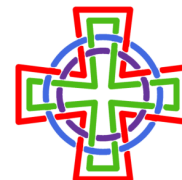




UNITED LUTHERAN CHURCH



479-855-1325

100 Cooper Road Bella Vista, AR 72715

www.unitedlutheranbv.org

THURSDAY UPDATE MAY 10, 2018



This Week's Scripture Readings:

1st Reading: I John 5:9-13

Psalm: 1

2nd Reading: Acts 10:44-48

Gospel: John 1:15-17, 21-26



FAMILY ART NIGHT FRIDAY, MAY 11TH @ 6:00PM

ALL ARE WELCOME TO JOIN US IN A PAINTING PROJECT!



BREAKFAST CLUB

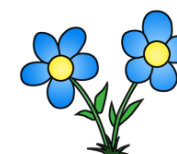
MONDAY, MAY 14TH @ 8:00AM

Devotional: Dick Muller

Guest Speaker: Robert McAfee, Climatologist



BRING MAY FLOWERS FROM YOUR GARDEN
TO BRIGHTEN UP THE TABLES AND THE DAY!



PLEASE SIGN UP IN THE NARTHEX- SEE YOU THERE

MAY BOOK CLUB:

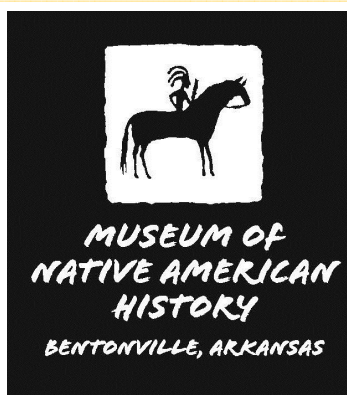
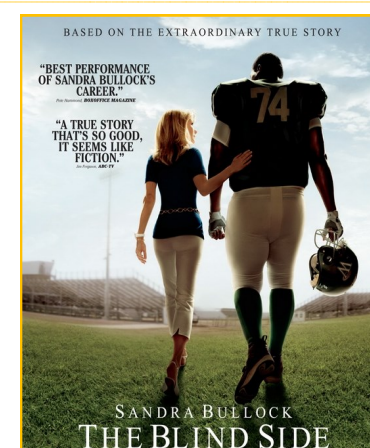
TUESDAY, MAY 15TH @ 6:30PM

Everything Happens for a Reason: And Other Lies I've Loved

MOVIE NIGHT: THE BLIND SIDE THURSDAY, MAY 17TH @ 6:30PM

Popcorn and fellowship will be provided.

All are welcome!



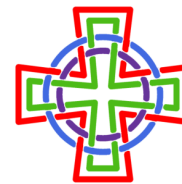
JOPPA SHEPHERD GROUP LUNCH & OUTING SATURDAY, MAY 19TH 11:30AM-1:00PM

We will meet at Acropolis in Bentonville for lunch
and then head over to the Native American Museum.





UNITED LUTHERAN CHURCH



479-855-1325

100 Cooper Road Bella Vista, AR 72715

www.unitedlutheranbv.org

THURSDAY UPDATE MAY 10, 2018

ANNUAL CONGREGATIONAL MEETING SUNDAY, MAY 20TH

immediately following the service

One main item that will require your vote is the election of Council positions, Vice President, Parish Fellowship, and Social Ministry.

We will have lunch immediately following the meeting. Please sign up in the narthex.

Voting members are confirmed members who have communed in this congregation and shall have made a contribution of record to this congregation during the current or preceding calendar year. Members of this congregation who have satisfied these basic standards shall have the privilege of voice and vote. One hundred (100) voting members shall constitute a quorum. See you there!

ADULT GRIEF SUPPORT GROUP

EVERY WEDNESDAY

May 23rd-June 27th

2:00-3:30PM

Circle of Life Hospice - 1201 NE Legacy Parkway Bentonville

Pre-registration required - CALL 479-872-3364

LITTLE PANTRY NEEDS DONATIONS!

We are asking for donations to help us keep the pantry stocked. Below is a list of items appropriate for our pantry. Thank you!



Cereal, Peanut Butter, Jelly, Ramen Noodles, Vienna Sausages, Spaghetti O's, Ravioli Macaroni and Cheese, Canned fruit (peaches, pears, etc), Canned soups, Canned vegetables (corn, green beans, etc), Pop tarts, Crackers (cheez its, peanut butter, cheese, etc), Juice boxes (like capri suns), Nutri grain bars, Tuna, Canned chicken, Spam

NEW! ULC T-SHIRTS - PRE-ORDER NOW!

We have new t-shirts designed for our church!

The deadline for ordering is noon on May 13th.

The cost for a t-shirt is \$13.00.

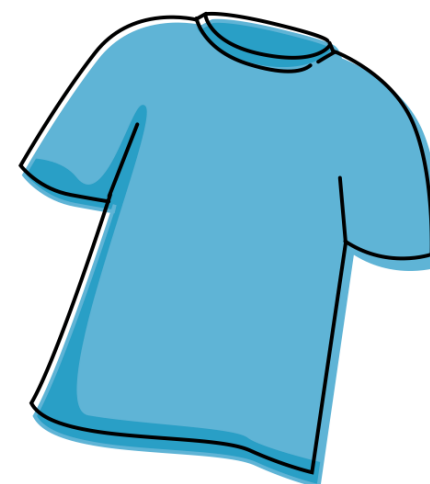
You must pre-pay; if you are writing a check, please make it out to United Lutheran Church.

If you have any questions, please check with Pastor or Ms. Sarah.

Sizes available are: Youth S-L, Adult S-3X.

Order forms are available in the narthex.

All proceeds benefit our Youth program.



Carry kindness throughout the week!

Blessed are the pure in heart, for they will see God.

-Matthew 5:8

